



# NEWSLETTER

MARCH 2026

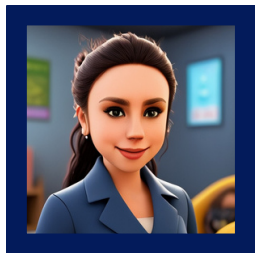


## STAFFING UPDATES

I wanted to share some important staffing news with you. After nearly nineteen years of dedicated service to Berry Hill, the wonderful Miss McIntyre has decided that this Easter will mark the beginning of a new chapter for her, as she steps away from teaching and into a fresh adventure. She has been an exceptional colleague and a teacher who has consistently gone above and beyond for every child in her care. Although she loves the job deeply, teaching is a profession that often stretches well beyond the school day, and after almost two decades of giving so much of herself, we fully understand her wish to pursue a role that allows a healthier work-life balance. She leaves with our admiration, gratitude, and very best wishes.



A couple of weeks ago, the children of 5MM joined us in interviewing candidates for the vacancy, and they were a tremendous help. I am delighted to let you know that we have made a very strong appointment: Miss Webber will be joining us straight after Easter as the new class teacher for 5MM (we may need to rethink the class name!). I have every confidence that she will hit the ground running and continue the positive, settled year the children are enjoying. While change naturally requires a little trust, please be reassured that 5MM will remain in excellent hands.



I am also delighted to share that Miss Hickman, one of our 3 apprentice teaching assistants this year, has passed her course with flying colours, joining Mrs Bell and Miss Darbyshire in securing a distinction. Miss Hickman has worked tirelessly over the past 18 months and I am so pleased that this has been recognised by her course provider.

## PLEA FOR HELP!



As a school with a building that constantly needs a little TLC, we were hoping to begin renovating several areas, starting with the visitor toilets at the front of school and some of the children's bathrooms, which have suffered after seven years of persistent roof leaks. We also planned to remodel a couple of the cloakroom spaces to give the children more room to hang their belongings.

Unfortunately, since completing our last projects, the cost of works has skyrocketed, and the quotes we are receiving have, in some cases, quadrupled. If any families know of a reputable builder or firm who won't inflate a quote simply because it's for a school, or if any parents are in a position to come in and talk through what we are hoping to achieve, we, and the children, would be incredibly grateful.



# NEWSLETTER

MARCH 2026

BERRY HILL

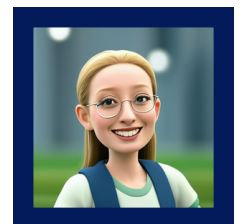
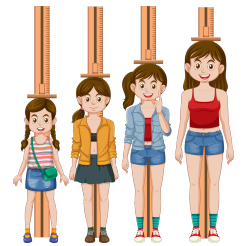
## NEXT PHASE OF BUILDING WORK

The huge project to replace the entire roof, ceilings, lighting, alarms and hopefully the heating system continues. About 70% of the external roof work has now been completed and although the atrocious weather over the past few months has delayed progress a little, the project is not too far off-track. Some of the scaffolding has been able to come down around Key Stage 1 and has already been removed from the top block.

During some point during the summer term, the internal work in Years 1 and 2 as well as Year 6 and the front of school will commence. Classes will have to temporarily have to move out of their rooms into other spaces when it's their classroom being done, but so far as a school community we've all coped with being adaptable and making the best of things and I know we'll continue in this manner. The thought of ending up with a waterproof roof and with classrooms where all the lights work is enough to keep us going!

## RSHE CONSULTATION

The government has published new RSHE guidance, which becomes statutory from September 2026, and we would like to invite any interested parents to a consultation after school on Monday 20th April to look through our plans, see when different content is taught, and view the materials we will be using. Relationships Education and Health Education are compulsory for all primary-aged children, and so are the elements of puberty and human reproduction that sit within the National Curriculum for science, meaning children must be taught about body changes, life cycles, and the biological facts of reproduction as part of their science learning. The only lessons from which parents may request to withdraw their child are those that go beyond the science curriculum, for example, any additional teaching about sexual intercourse or conception delivered outside the statutory science requirements. If you would like to understand more about how this looks at Berry Hill or ask any questions, the consultation will be an ideal opportunity. Miss Clarke (our PSHE Lead, pictured right) will be writing to you with further details.



## AFTER-SCHOOL CLUB EXPANSION

We're delighted to share that we have been successful in applying for some funding to help us expand our after-school club provision (The Hangout) from 30 to 45. This funding will be used on updating equipment, improving our activity offerings, and opening up additional spaces through being able to increase our staffing slightly.

If you need, or think you may need, a place for your child at after school club, please contact the school office either on [office@berryhill.notts.sch.uk](mailto:office@berryhill.notts.sch.uk) or by ringing 01623 478477. As a very advanced heads up, once all of the building work is completed, we are looking into the feasibility of running some holiday clubs and will update you when we can.

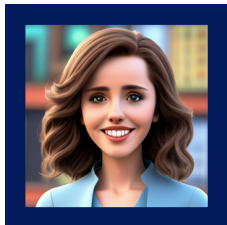


# NEWSLETTER

MARCH 2026

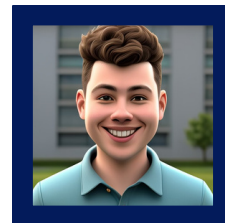
BERRY HILL

## UPDATE ON OUR SCHOOL DEVELOPMENT PLAN



A quick update on how our development priorities are progressing this year. Priority 1: Our first year of developing Berry Hill as an oracy centre of excellence is going very well. The new oracy curriculum and Miss King's work on 'talk tactics' are already making a noticeable impact in lessons, and we are firmly on track to becoming a school known for articulate, confident speakers.

Priority 2: Our focus on embracing the opportunities AI offers has made this a fast-moving and exciting year. Led by Mr Toon, several initiatives are already improving teaching and learning, with an emphasis on using technology only where it genuinely adds value.



Priority 3: We are continuing to strengthen how feedback is used—both during learning and when staff work with individuals or groups—to ensure it is as effective and efficient as possible. This also includes reflecting on how we communicate with all stakeholders and how we can use clear communication to build the strongest home-school relationships.

## WE NOW HAVE AN ORCHESTRA!

After years of being harassed by Berry Hill's music lead, Mrs Tranter, I am absolutely delighted to share the formation of Berry Hill's very first school orchestra!

Meeting on Thursday mornings before school, the children receive expert tuition from our music partner, Mr Stanton and SoundAdvice.

Currently sporting recorders, violins, trumpets and trombone, and with plans to add in flute, clarinet, cello and probably a double bass by the time we're done, we can't wait to be in a position to showcase the amazing talents of these youngsters.



## SOME IMPORTANT DIARY DATES

Mon 23rd Mar - Y5 residential Mount Cook  
Mon 13<sup>th</sup> Apr - start of 3 weeks of the swimming pool on site  
Tues 14<sup>th</sup> & Wed 15<sup>th</sup> Apr - Parents Evenings  
Mon 20<sup>th</sup> Apr - Year 4 residential to York  
Mon 20<sup>th</sup> Apr - RSHE Parents' Consultation  
Tues 28<sup>th</sup> Apr - Y1 trip to Yorkshire Wildlife  
Mon 11<sup>th</sup> May - start of Y6 SATs Week

Fri 15<sup>th</sup> May - PTFS Doughnut Friday!  
Tues 19<sup>th</sup> May - KS1 Sports Day (AM)  
Weds 20<sup>th</sup> May - KS2 Sports Day (AM)  
Thurs 21<sup>st</sup> May - Y3 residential to Perlethorpe  
Mon 1<sup>st</sup> June - INSET Day  
Mon 8<sup>th</sup> June - Y6 residential to Dearne Valley